



Structural  
Engg.



Project  
Management



aadspro ERP



Estimax



Optimax



aadspro



Geotech  
Engg.



Training



# S & R CONSULTANTS

Since 1998



## ABOUT US

S&R Consultants is an Engineering firm with its office at Kochi, Kerala, India. Being a highly successful company providing specialist services to clients from the construction industry, we are proud of our proven track record in providing effective solutions and results.

## MISSION & VISION

Our commitment is to provide our clients with the highest level of quality and professionalism in servicing their needs in all fields of construction.

## Our Services

- **Structural Design**
- **Geotechnical**
- **Software development**
- **Project Management**
- **Construction ERP**
- **Training**
- **Shop drawing**
- **Quantity Survey**
- **Quality control**



### **STRUCTURAL DESIGNING**

Structural design team has been providing reliable and economic designs for more than 1300 structures in reinforced concrete and structural steel. These drawings pass through a three checking and review process before delivery. Softwares used for designing are ETABS, Aadspro (an inhouse software), AutoCAD, Revit, STAAD Pro.

### **PROJECT MANAGEMENT**

Project Management team plays an effective role in planning the projects in a time bound schedule providing benefits to both the client and the host organization.

Services we provide include Planning, Quality Control, Bar Bending Schedule, Optimization of steel Bars, Bill checking, estimation, 3D updation of structure and ERP Implementation.

### **SOFTWARE DEVELOPMENT**

We have an effective software team, we offer both software products and customized software development.

Our products include: EstimaX Pro, Aadspro ERP, Aadspro Design & Detailing , Optimax, Auto 3D.

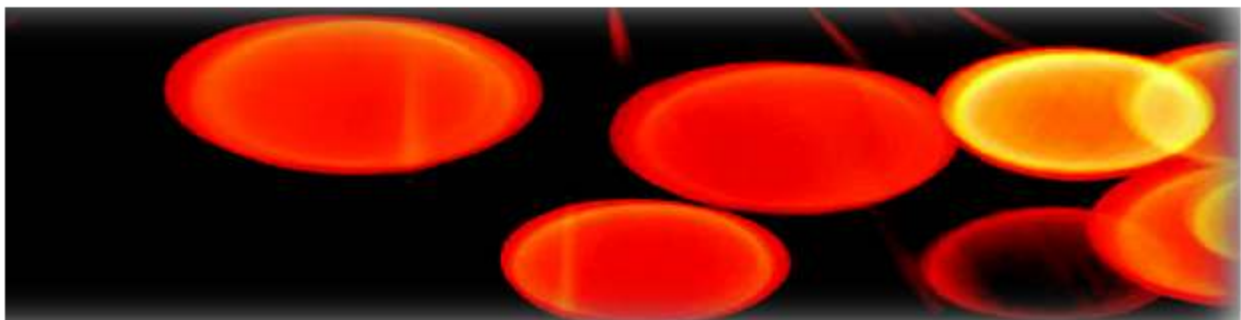
### **GEOTECHNICAL**

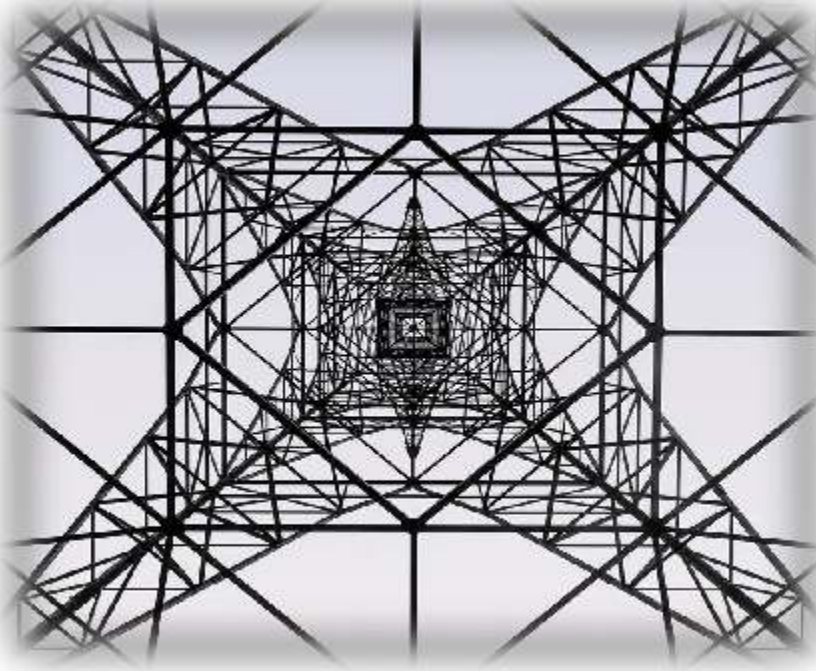
Geotechnical Engineers provide recommendations for various geotechnical problems based on the soil test reports and suggesting suitable foundation design.

### **INTERNSHIP TRAINING PROGRAM**

Training in most of the different civil engineering branches is offered including software development. Free internship program is offered for groups in topics of our interest which changes from time to time. Some of those attending training may be selected for employment.

**“CONNECTING YOUR BUSINESS TO THE TECHNOLOGY  
RESOURCES YOU NEED”**





**Layout Planning**

---

**Modelling**

---

**Designing**

---

**Detailing**

## **STRUCTURAL DESIGNING**

We are happy to complete more than 1300 projects in Structural & Geotechnical designing, detailing and construction management of Industrial, Commercial and residential buildings in the last 20 years since we have started in Kochi, Kerala, India. We are managing more than 60 ongoing projects presently.

We are equipped with the latest software in designing, which include STAAD pro & Etabs along with an inhouse software system (Aadspro) fully integrating AutoCAD, Etabs, STAAD and design modules.

The software system gives us unmatched capability to provide details upto bar bending schedules and even sequencing of bars to reduce wastage. The system is especially useful for cut and bend automation. Please go through the page on bar bending schedule and resulting advantages. Another unique estimation software integrated with AutoCAD is presently available for download and installation from [www.aadspro.com](http://www.aadspro.com). **Some of the modules are sold to L&T EDRC in Chennai, Mumbai and Delhi. Service on BBS is given to many reputed builders in Kerala. Some of the other clients who has purchased are Sobha Developers, Gulfar etc.**





**Planning**

**Estimation**

**Bar bending  
schedule**

**Optimization of  
steel bars**

**Quality control**

**Bill checking**

**3D- Updation of  
structure**

### **PROJECT MANAGEMENT (with BIM)**

Investment in effective project management will have a number of benefits to the stakeholders involved in the project for better deliverability of the project. With our inhouse ERP software we are connecting 6D in project management. 6D consists of basic 3D with planning as 4<sup>th</sup> dimension and costing as 5<sup>th</sup> dimension and facility management as 6<sup>th</sup> dimension. Our ERP Integrated 3D modelling system provides a complete BIM solution.



**Planning:** The project shall be provided with an online server-based system, ERP, where the user schedule tasks and update it on a regular basis which will ensure that the project is completed within the required time frame.

**Estimation:** Estimax software is a simple software that can be used to do estimation quickly. For more info visit: [www.aadspro.com/product.php?id=9](http://www.aadspro.com/product.php?id=9)

**Bar bending schedule:** BBS will be provided for steel reinforcement which will provide quality of work and ensure that it is in accordance with the design provided.

**Optimization of steel bars:** Optimax software will be used to optimise bar cutting pattern whereby wastage during cutting can be reduced to about 1% from 5%. For more info visit: [www.aadspro.com/product.php?id=11](http://www.aadspro.com/product.php?id=11)

**Quality control:** Quality control forms will be used for all activities, especially concrete and steel to ensure quality of work.

**Bill Checking:** Estimax can also be used for bill checking, after completion of work by simply scanning the completed area of work and getting the results immediately.

**3D-updation of structure:** 3D-modelling of the structure can be done using Autodesk Revit software for an enhanced visualisation.

**Option- 1:** Site engineer will coordinate the above by spending 50% time at site and remaining for coordination with offices.

**Option- 2:** Site engineer will visit the site every alternate days (for small projects).

**Option- 3:** For all construction project requirements the rate will be, ₹100/Sqft up to 5000Sqft. More than 5000 sq ft the rate will be ₹30/Sqft. In between the above area the rate will be proportional. (rate includes Structural, Estimation, Planning, project management with ERP.)

## COST ANALYSIS

Let's consider a building with a construction cost of ₹2000/sqft and land cost of ₹1000/sqft. Considering loss due to 10% bank interest, 5% rent loss and 5% inflation, then one year delay in a project will cause ₹600/sqft.

Even avoiding half a month out of one year delay will justify the cost of project management. Also the integration of ERP and data record with ERP system being implemented will result in additional saving.

## Aadspro ERP



**AadsproERP** is a server based software system developed for builders, contractors, and consultants to manage their daily activities and control them in a better and efficient way. The AadsproERP helps them to monitor the daily activities in their organizations. This six dimensional approach connects engineering, time, cost and information through all platforms. This will help them to plan and re-structure their works to give the client a better service or a product.

This software manages and tracks products and services, and maintains detailed records of items purchased, consumed or sold. With several tracking, pricing, and grouping options to meet the needs of your business, our Multi-Location Inventory add-on for inventory control is usable for multiple locations. AadsproERP is a leading ERP platform for the construction sector. Our strength is integration with drawings in AutoCAD, intelligence to understand the graphics, which reduce the time and effort to create data.

## **Aadspro Engineering Module**

Analysis, autoscan design, detailing, scheduling and sequencing program or aadspro is a new generation design package which can be used for a number of applications in Civil Engineering. It is integrated with commonly used programs like Etab/ STAAD Pro and AutoCAD. The software consists of different modules which can perform the design of different parts of a structure. Aadspro also has the option for designing all beams and slabs in a floor. Through which the user gets automatic detailing in CAD format.

## **TRAINING AND INTERNSHIP**

### **INTERNSHIP PROGRAM**

One month internship program in most of the different civil engineering branches are offered including software development. Free internship program is offered for groups in topics of our interest which changes from time to time. Paid training is offered in topics of your interest. Best of 5 to 10% of all those who completes internship program successfully is selected for associate program.

### **ASSOCIATE PROGRAM**

Working under our guidance in live projects on salary for selected peoples who have successfully completed internship. Freshers (B Tech/M Tech) are selected through this program only.

### **MANAGEMENT TRAINEE PROGRAM**

One month training program which covers all the areas of construction is provided. As the battle for top talent becomes more competitive, employee training and development programs are more important than ever. Free trainee program is offered for groups in topics of our interest which changes from time to time. Paid training is offered in topics of your interest. Best of those attending training may be selected for employment.





## SOME OF OUR MAJOR CLIENTS



## BANKING DETAILS

- Bank details for online payment:  
**In favour of S&R Consultants**  
**Federal Bank Limited**, Girinagar, Current A/c No. – 10580200009792,  
**GSTIN: 32AACPZ8566E1ZE**  
MICR Code – 682049009, IFSC Code – FDRL0001058  
**PAN No. – AACPZ8566E**
- Payment gateway address for payment through online webpage. [www.aadspro.com/payment.php](http://www.aadspro.com/payment.php)



## **S & R CONSULTANTS**

Office : 2nd Floor, S & R Building, Soonoro Church 1st Cross Road, Elamkulam  
Kochi - 682 020, Kerala, India. Tel : +91 82810 82000, 82810 83000  
E-mail : [rejizac2004@gmail.com](mailto:rejizac2004@gmail.com)  
[www.sandrconsultants.com](http://www.sandrconsultants.com) [www.aadspro.com](http://www.aadspro.com)